

MONTHLY MEMBERSHIP PROGRESS REPORT

LOCATION INDIA

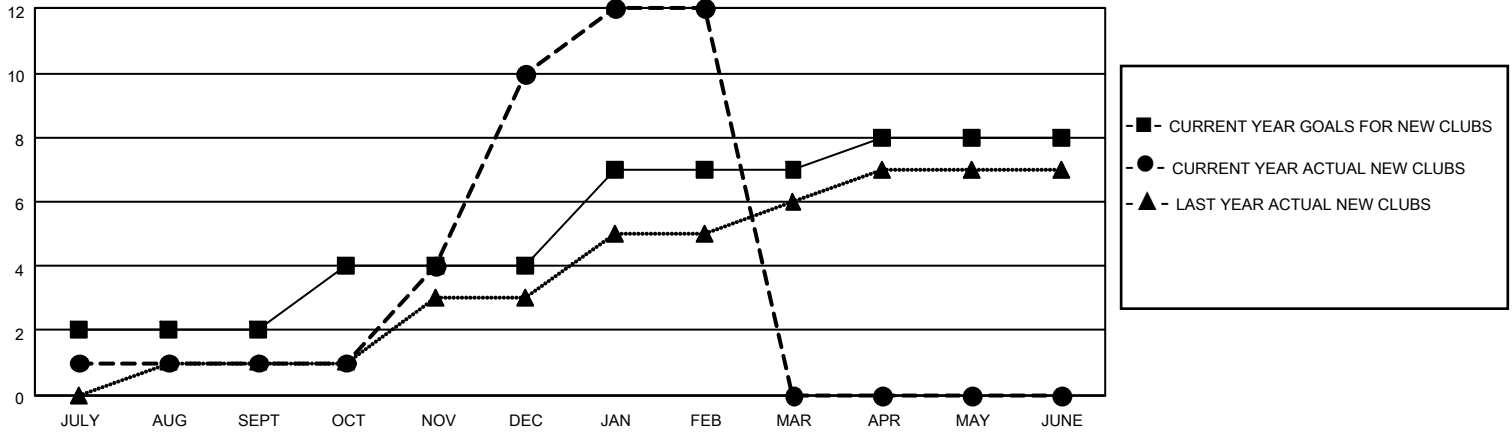
District 318 B

Results as of: 2/28/2021

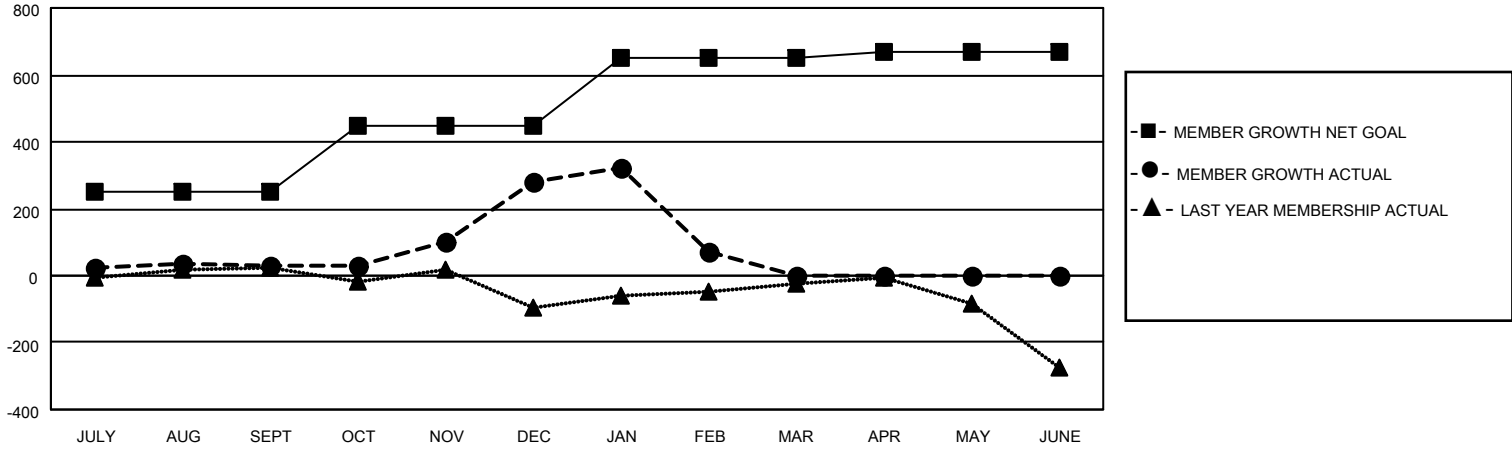
Clubs			
RESULTS FOR 2020-2021			
QUARTER	NEW CLUB GOAL	NEW CLUBS	DROPPED CLUBS
JULY/AUG/SEPT	2	1	0
OCT/NOV/DEC	2	9	0
JAN/FEB/MAR	3	2	17
APR/MAY/JUNE	1	0	0

Members			
RESULTS FOR 2020-2021			
QUARTER	MEMBER GROWTH NET GOAL	MEMBER GROWTH ACTUAL	DROPPED MEMBERS ACTUAL (including transfers)
JULY/AUG/SEPT	250	81	44
OCT/NOV/DEC	200	373	73
JAN/FEB/MAR	200	65	274
APR/MAY/JUNE	20	0	0

GOALS AND ACTUAL NEW CLUBS CUMULATIVE



GOALS AND ACTUAL MEMBERS CUMULATIVE



DROPPED CLUBS: 17

57 CLUBS OF 134 ADDED 1 OR MORE NEW MEMBERS

GENDER DISTRIBUTION

MALE 3,155 (84.83%)
 FEMALE 564 (15.17%)

DROPPED MEMBERS

[CLICK HERE FOR CUMULATIVE MEMBERSHIP DATA](#)

DECEASED	8
CLUB CANCELLED	260
OTHER	123
TOTAL	391

TOTAL FAMILY UNIT MEMBERS	927
FAMILY MEMBERS PAYING HALF DUES	478